



Presentation Overview

1. RFMP Status Update
2. What to Expect in the Next Couple of Months



1. RFMP Status Update

Stakeholder Outreach Information

- Stakeholder Hotline: (209) 475-7688
- RFMP Website: www.sjafca.com/ljrdsrfmp.php
- New Information Added to the Website:
 - Meeting Minutes



1. RFMP Status Update

Action Items Completed Since July TAC

- Regional Discussion on Paradise Cut Widening with Stakeholders
- Inter-Regional Coordination Meeting with Upper and Mid-SJR RFMP Leads
- Met with City Officials with Lathrop and Manteca
- SB 1278 Depth Map from GIS Data Provided by DWR
- Met with DWR to Discuss Coordination on the RFMP
- Held Financial Planning Kickoff Meeting



1. RFMP Status Update

Some Key Findings from Paradise Cut Meeting

- NRDC Permit Conditions require River Islands to:
 - Setback levee northeast of Paradise Cut between the railroad and I-5 on RD 2107;
 - Get Paradise Cut to be able to pass flow nearer the design flow;
 - Setback levee along RD 2062;
 - Remove bench behind the weir.
- Paradise Cut Widening – Proponents understand downstream stakeholder support is needed for widening of Paradise Cut.
- Draft CVHS Hydrology may indicate RD 17 levees are tall enough to contain the 200-Year flows.
- Possible RFMP Project Recommendation: Paradise Cut Corridor Management Plan



1. RFMP Status Update

Some Key Findings from Inter-Regional Coordination Meeting

- All Regions were at a similar stage of plan development.
- Upstream Regions were interested in LSJ/DS support for transient storage.
- Next Coordinating Meeting set for October 1st, 2013.



1. RFMP Status Update

Some Key Findings from City of Lathrop Meeting

- Two Council Meeting Presentations
 - Overview of SB5/ULOP (8/5)
 - Overview of the RFMP, relationship to SB5 & Local Plans (8/19)
- Staff encouraged City officials to consider starting a local plan in the near future in order to minimize economic impacts of SB5



1. RFMP Status Update

Some Key Findings from City of Manteca Meeting

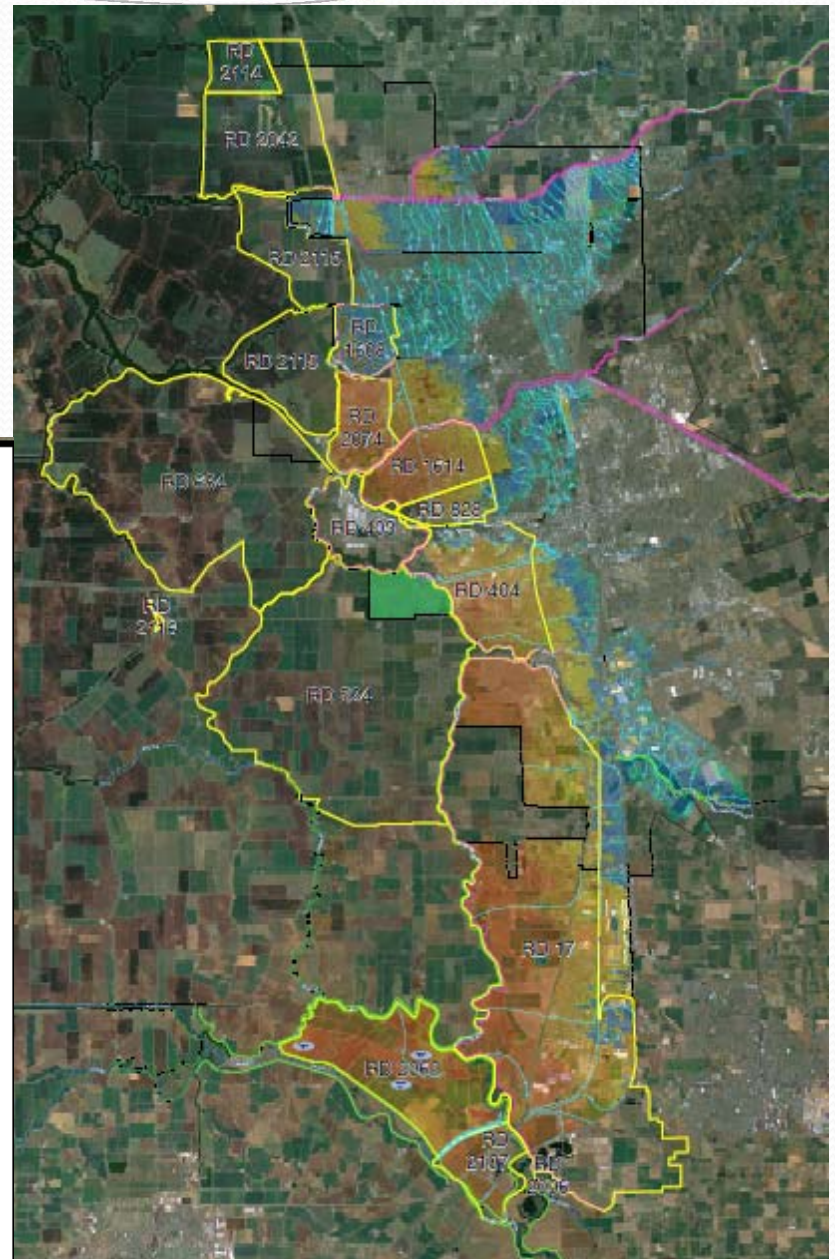
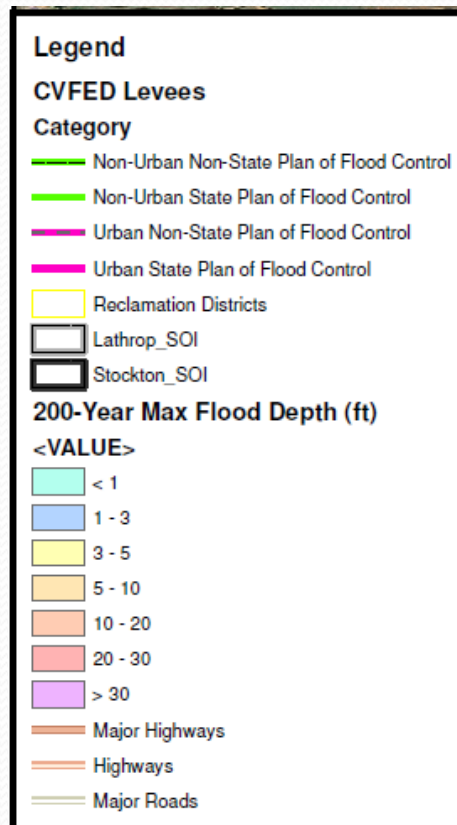
- City started an “Assessment District” for RD 17 Dry Land Levee that may be modified once the 200-year maps are received for Manteca.
- City expressed interest in a strategic plan with Lathrop, RD 17, etc. outlining next steps for General Plan and Zoning Ordinance updates and local plan development.
- City is prepared to update General Plan and Zoning Ordinance As-Soon-As-Possible. (but may wait until July 2015)
- DWR has indicated 200-year depth maps will be provided by the end of 2013 for Manteca.

1. RFMP Status Update

Some Key Findings from Meeting with DWR

- DWR is drafting a document to serve as a “vehicle” to share info between RFMP and DWRs BWFS.
- RFMP team will meet with DWR throughout the process to enable DWR to incorporate local’s perspectives and priorities into the BWFS.

SB 1278 200-yr Floodplain Maps





2. What to Expect in the Next Couple of Months

- Draft of Introduction and Regional Setting chapters of the RFMP (September)
- Draft Existing Conditions chapter of the RFMP (October)
- Follow up from RFMP Team Members to collect additional information
- Email updates

Please remember to submit your in-kind expenses to Gemma Biscocho Gemma.Biscocho@Stocktongov.com



QUESTIONS?