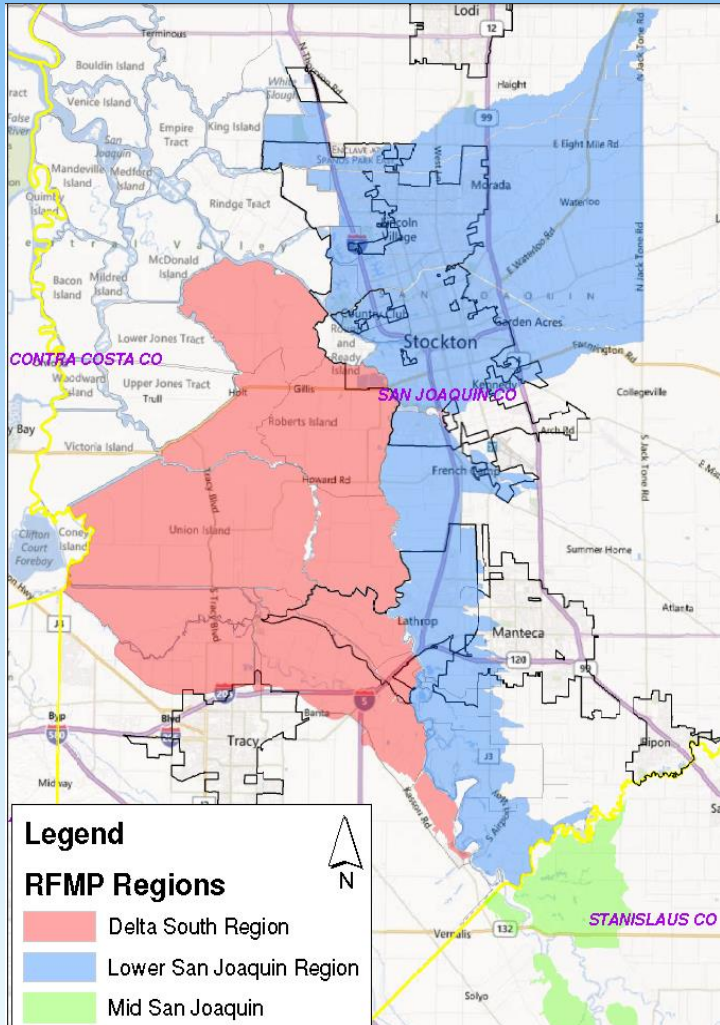


Lower San Joaquin and Delta South Regional Flood Management Plan

October 16th, 2013



SJAFCA
San Joaquin Area FLOOD CONTROL Agency

Presentation Overview

1. RFMP Status Update
2. What to Expect in the Next Couple of Months

RFMP Status Update

Stakeholder Outreach Information

- Stakeholder Hotline: (209) 475-7688
- RFMP Website: www.sjafca.com/ljrdsrfmp.php

RFMP Status Update

Action Items Completed Since August TAC

- SB 1278 Hydraulic Models for Stockton & Lathrop Reviewed
- Paradise Cut Symposium is Being Coordinated
- Continued RFMP Document Development

RFMP Status Update

RFMP Document Status

Lower San Joaquin/Delta South Regional Flood Management Plan Document Status			
RFMP Section	Description	% Complete	Status
1	Acronyms & Abbreviations	50%	In Progress
2	Executive Summary	20%	In Progress
3	Introduction	90%	Internal Review
4	Regional Setting	90%	Internal Review
5	Assessment of Flood Hazards	85%	Internal Review
6	Proposed Improvements	25%	In progress
7	Regional Priorities	0%	No action
8	Financial Plan	5%	Basic Recon
-	Regional Atlas Updates	10%	Basic Recon

RFMP Status Update

Some Key Findings from a Review of SB 1278

Hydraulic Models

- SB 1278 hydraulic models are truncated just upstream of Paradise Cut, and use Vernalis gauge flows
- Breaches are located in segments of potential geotechnical and/or freeboard failures as indicated in ULE/NULE evaluations
- Breach widths were found by multiplying the levee height by 50
- Models are calibrated against 2006 high water marks, however further adjustments to model n-values could likely result in a closer calibration
- The HEC-RAS and Flo2D models released by DWR may require some additional modifications (i.e. to bridges, lateral structures, storage area connections, FLO2D embankments, etc.) to more accurately reflect field conditions/observations

RFMP Status Update

Key Information Pending from DWR

- Information on how DWRs Conservation Strategy/BWFS relate to the Region
- CVFED Task Order 25 Models
- CVFED “Ultimate Condition” Models
- ULE Documentation

What to Expect in the Next Couple of Months

- Draft RFMP Sections to be Released for Stakeholder Input:
 - Introduction
 - Regional Settings
 - Assessment of Flood Hazards, Challenges, and Risks
- BWFS and CS Coordination Meeting with DWR
- Paradise Cut Symposium
- Project Solicitation/Input Form
- Follow up from RFMP Team Members to collect additional information
- Email updates

Please remember to submit your in-kind expenses to Gemma Biscocho
Gemma.Biscocho@Stocktongov.com

The image features a light blue background with a darker blue wavy pattern at the top. The word "QUESTIONS?" is written in a bold, green, sans-serif font, positioned in the upper left quadrant of the slide.

QUESTIONS?